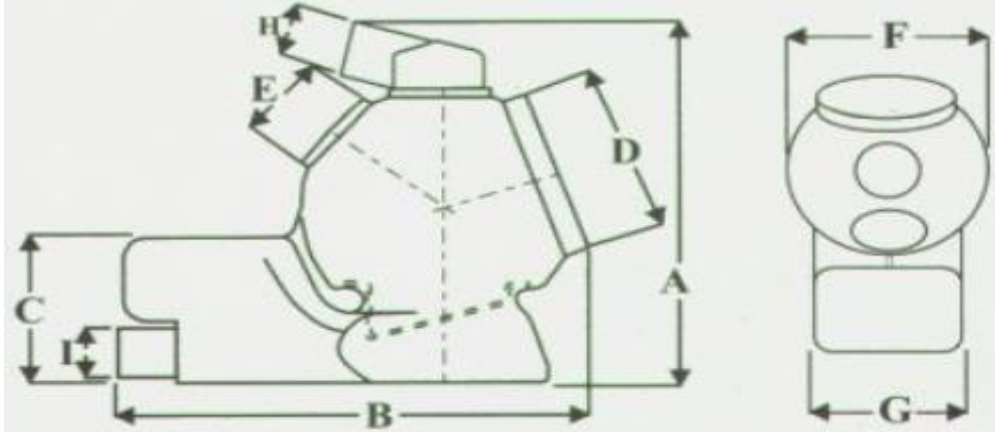


Specifications & Parts



A	B	C	D	E	F	G	H	I
OVERALL HEIGHT	OVERALL LENGTH	REAR END HEIGHT	COVER OPENING	VENT CONNECTION	OVERALL WIDTH	REAR END WIDTH	INLET CONNECTION	OUTLET CONNECTION
IN.	IN.	IN.	IN.	IN.	IN.	IN.	IN.	IN.
17"	17 3/4"	6 3/4"	7 1/2"	4"	11"	8 1/2"	2"	2"
CM.	CM.	CM.	CM.	CM.	CM.	CM.	CM.	CM.
43.1	40	17.1	19	10.1	27.9	21.5	5.1	5.1



FILTRATION MEMBRANE

A specially designed filtration membrane with unique characteristics to capture wet waste solids and grease.



Components

	<p><u>RHINO UNIT</u> # RHG001</p> <p>Compact and light. Made of high density polyethylene</p>		<p><u>LID</u></p> <p>Large and easy to open lid facilitating filter change. Made of high density polyethylene</p>		
	<p><u>FILTRATION MEMBRANE</u></p> <p>Specially knitted to permit adequate expansion.</p>		<p><u>INLET CONNECTION</u></p> <p>Made of high density polyethylene.</p>		
	<p><u>STRAINER</u></p> <p>Designed to support the filtration membrane as it fills up. Made of polyethylene.</p>		<p><u>GROUND BRACKET</u></p> <p>Stainless steel anti-rust bracket to secure the unit to its base.</p>		
	<p><u>INLET TIGHTENING RING</u></p>		<p><u>LID GASKET</u></p>		<p><u>INLET GASKET</u></p>

Accessories



Item # RH0SSS

STAINLESS STEEL STAND



Item # AG001

AGITATOR



Item # PS001

STRAINER FOR PUMP UNITS